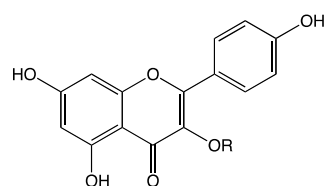


サンプル (6 mg/kg) と同時にグルコースを投与して30分後のマウス血糖値 (%) で評価



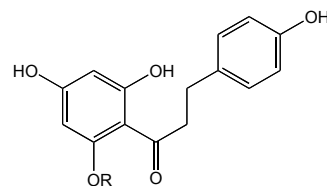
MFA = multiflorin A: R =  $\alpha$ -1-Rha- $\beta$ -d-Glc-OAc

MFB = multiflorin B: R =  $\alpha$ -1-Rha- $\beta$ -d-Glc

KAE = kaempferol: R = H

KGL = kaempferol glucoside: R =  $\beta$ -d-Glc

KRU = kaempferol rutinoside: R =  $\beta$ -d-Glc- $\alpha$ -1-Rha



PHL = phloridzin: R =  $\beta$ -d-Glc

図6 マルチフロリン関連化合物が食後血糖値上昇に及ぼす影響